

Place	Last	First	Division	Cntry	Class	Year
1	Baird-Remba	Rebecca J	VIRGINIA	USA	D	2009
2	Stoyanovsky	Maria	METRO NYC	USA	D	2008
3 T	Goldstein	Mikela	LONG ISLND	USA	U	
3 T	Kang	Jessica J	LONG ISLND	USA	D	2008
5	Elbert	Katie C	NEW JERSEY	USA	D	2008
6	LeClair	Katherine	NEWENGLAND	USA	D	2009
7	Ponticello	Claire R	S. JERSEY	USA	D	2009
8	Lawrence	MacKenzie	KANSAS	USA	E	2008
9	Rios	Dannette V	NATIONAL	USA	U	
10	Lee	Audrey K	NEW JERSEY	USA	D	2008
11	Mukherjee	Anisha P	NEW JERSEY	USA	D	2008
12	Zhang	Linda	ALABAMA	USA	D	2009
13	Lee	Julia	NEW JERSEY	USA	D	2009
14	Alexander	Erin M	GOLDCST FL	USA	D	2009
15	Farhane	Elkhansaa	METRO NYC	USA	D	2009
16	Ng	Megan M	METRO NYC	USA	E	2008
17	Umanskiy	Tina	ILLINOIS	USA	E	2008
18	Liu	Tiffany	GEORGIA	USA	D	2008
19	Wilson	Hailee A	ORANGE CST	USA	D	2009
20	Chapman	Lesley F	KENTUCKY	USA	D	2008
21 T	Li	Sonya	NORTH CA	USA	E	2009
21 T	Dickey	Jennifer E	WESTERN WA	USA	D	2008
23	Gong	Jan	LONG ISLND	USA	E	2008
24	Kessler	Deirdre P	METRO NYC	USA	E	2008
25	Little	Danielle R	SO. TEXAS	USA	D	2008
26	Santoro	Elizabeth	NEWENGLAND	USA	D	2008
27	Duerson	Lauren M	S. CAROLINA	USA	E	2008
28	Knoppel	Christina	ARIZONA	USA	E	2007
29	Lindstrom	Erica G	KANSAS	USA	D	2009
30	Dietrich	Casey J	PHILADELPH	USA	D	2007
31	Chanco-Everett	Aileen	NORTH CA	USA	D	2006
32	Vashisht Goel	Ruchika	CENTRAL CA	USA	D	2009
33	Gross	Rachel S	COLORADO	USA	E	2008
34	Chou	Margaret	NEW JERSEY	USA	D	2007
35 T	Gobble	MaryAnne M	N. CAROLINA	USA	D	2008
35 T	Schaffer	Kay	METRO NYC	USA	E	2008
37	Zazzera	Christine	NEW JERSEY	USA	U	
38	Troll	Lindsay E	GATEWAY FL	USA	E	2009
39	Martin	Lisa A	COLORADO	USA	E	2007
40	Prestwich	Paula J	UTAH/S. IDA	USA	E	2008
41 T	Carney	Dorothy	VIRGINIA	USA	D	2008
41 T	Kunihiro	Ashley M	SO. CALIF.	USA	D	2009
43	Collins	Rebecca H	WESTERN WA	USA	D	2008
44	Faraj	Razan	SAN DIEGO	USA	E	2009
45	Pierce	Marcia M	KENTUCKY	USA	E	2006

Place	Last	First	Division	Cntry	Class	Year
46	Griepp	Kristina Z	WESTERN NY	USA	U	
47	Guertin	Michelle *	CANADA	CAN	U	
48	Fishman	Kimberly R	WEST-ROCK	USA	U	
49	Zenger	Kathryn E	TENNESSEE	USA	E	2009
50	Li	Yolanda L	WEST-ROCK	USA	E	2008
51	Feinglass	Sydney A	N.CAROLINA	USA	D	2009
52	McCarter	CJ F	S.CAROLINA	USA	D	2009
53	Lesser	Paula T	WESTERN NY	USA	U	
54	Adams	Kimberly D	VIRGINIA	USA	E	2008
55	Fulton	Rachel L	ILLINOIS	USA	D	2007
56	Treloar	Allison F	NEW MEXICO	USA	E	2008
57	Katz	Pamela B	ARIZONA	USA	E	2008
58	Fang	Deborah	GEORGIA	USA	D	2008
59	Barrera	Virginia C	WESTERN NY	USA	U	
60	DeChellis	BreAnn Eli	CENTRAL FL	USA	U	
61	Campbell	Lia R	S.CAROLINA	USA	U	
62	Choy	Ida *	NORTHEAST	USA	D	2008
63	Newton	Avery D	NEWENGLAND	USA	U	
64	DeLeon	Alexa M	ORANGE CST	USA	E	2009
65	Powers	Janine M	MARYLAND	USA	E	2008
66	Madduri	Maneeshika	VIRGINIA	USA	E	2008
67	Allen	Cindy M	CONNECTCUT	USA	D	2005
68	Mittleman	Jenny	NEWENGLAND	USA	E	2008
69	Puski	Suzette M	KENTUCKY	USA	U	
70	Vashisht	Suparna	CENTRAL CA	USA	U	
71	Sherman	Jessica	WEST-ROCK	USA	U	
72	Schaefer	Kerry S	WESTERN WA	USA	U	
73	Gottler	Victoria A	UTAH/S.IDA	USA	E	2009
74	Thouless	Helen R	WESTERN WA	USA	E	2007
75	Hofer	Carolyn	KANSAS	USA	U	
76	Carter	Carlene E	CENTRAL FL	USA	U	
77	Almon	Kathryn G	N.CAROLINA	USA	E	2009
78 T	Morell	Mariana	GOLDCST FL	USA	E	2008
78 T	Swale	Ryann E	NORTH CA	USA	E	2008
80 T	Bush	Christine	VIRGINIA	USA	D	2009
80 T	Manning	Lynne	NEWENGLAND	USA	E	2009
82	Wu	Amy L	ALABAMA	USA	E	2009
83	Shaw	Allison N	GATEWAY FL	USA	U	
84	Barnes	Anna (Elis	GEORGIA	USA	U	
85	Clayton	Juliet N	LOUISIANA	USA	U	
86	Mahaney	Stephanie	N.CAROLINA	USA	U	
87	Frank	Hallie G	NORTH TEX	USA	E	2008
88	Chenault	Kristi L	GEORGIA	USA	E	2008
89	Othenin-Girard	Linda R	SO. CALIF.	USA	U	
90	Hooper	Evelyn E	TENNESSEE	USA	U	

Place	Last	First	Division	Cntry	Class	Year
91	Tasker	Monisha B	NEWENGLAND	USA	E	2008
92	Pardue	Kristan M	GATEWAY FL	USA	U	
93	Wei	Olivia C	LONG ISLND	USA	U	
94	Zinney	Rachel S	GEORGIA	USA	U	
95	Gould	Barbara M	METRO NYC	USA	U	
96	Dorsel	Cornelia *	TENNESSEE	USA	U	
97	Rawlings	Jennifer	CENTRAL FL	USA	E	2007
98	Ausar-Sahu	Umi-Shakti	METRO NYC	USA	U	
99	Knapke	Helen R	COLUMBUSOH	USA	U	
100	Osinski	Brianna L	N.CAROLINA	USA	U	
101	Jiang	Christine	METRO NYC	USA	U	
102	Smith	Pamela S	WEST-ROCK	USA	U	
103	Li	Zhichun	ALABAMA	USA	U	
104	Castillo	Nallely M	GATEWAY FL	USA	U	
105	Pitz	Sara R	GEORGIA	USA	U	
106	Ferron	Natasha A	CENTRAL FL	USA	U	
107	White	Carla P	GEORGIA	USA	E	2008
108	Thurman	Allison L	CAPITOL	USA	U	
109	Steel	Katharine	TENNESSEE	USA	U	
110	Levitsky	Jackie M	WEST-ROCK	USA	U	

Number of A' 0

Number of B' 0

Number of C' 0

Number of D' 34

Number of E' 36

Number of U' 40

	Num	Fencer	Club	Division	Country	Natl	World Class	Year	Index
1	320	Feinglass, S	TOU FC	N. CAROLINA	USA		D	2009	3901
2	609	Lindstrom, E	INC	KANSAS	USA		D	2009	3901
3	16	Alexander, Erin M	MFC FL	GOLDCST FL	USA		D	2009	3901
4	587	LeClair, K	MOE FC	NEWENGLAND	USA		D	2009	3901
5	567	Kunihiro, A	GFS	SO. CALIF.	USA		D	2009	3902
6	592	Lee, Julia	FENCERS	NEW JERSEY	USA		D	2009	3904
7	1071	Wilson, Hailee A	SOUTHCFE	ORANGE CST	USA		D	2009	3905
8	772	Ponticello, C	F.A.S.J.	S. JERSEY	USA		D	2009	3905
9	317	Farhane, E	BROOKLYNFC	METRO NYC	USA		D	2009	3906
10	54	Baird-Remba, R		VIRGINIA	USA		D	2009	3906
11	1013	Vashisht Goel, R	CFA	CENTRAL CA	USA		D	2009	3906
12	651	McCarter, CJ F	FOOTHILLS	S. CAROLINA	USA		D	2009	3906
13	125	Bush, Christine	RCHMOND	VIRGINIA	USA		D	2009	3907
14	1099	Zhang, Linda	BIRMINGHAM	ALABAMA	USA		D	2009	3909
15	614	Little, D	TEXASFE	SO. TEXAS	USA		D	2008	3920
16	940	Stoyanovsky, M	FENCERS	METRO NYC	USA		D	2008	3921
17	589	Lee, Audrey K	GUTKOVSKIY	NEW JERSEY	USA		D	2008	3921
18	295	Elbert, Katie C	B.C.A.F.	NEW JERSEY	USA		D	2008	3922
19	170	Chapman, Lesley F		KENTUCKY	USA		D	2008	3922
20	707	Mukherjee, A	LFU /NEWARK	NEW JERSEY	USA		D	2008	3922
21	196	Collins, R	SAS	WESTERN WA	USA		D	2008	3923
22	146	Carney, Dorothy	CH.F.A.	VIRGINIA	USA		D	2008	3924
23	256	Dickey, J	SAS	WESTERN WA	USA		D	2008	3924
24	819	Rodrigues, J		ILLINOIS	USA		D	2008	3925
25	524	Kang, Jessica J	EUF	LONG ISLND	USA		D	2008	3925
26	181	Choy, Ida *	SEACST	NORTHEAST	USA		D	2008	3927
27	853	Santoro, E	RI FA&C	NEWENGLAND	USA		D	2008	3927
28	315	Fang, Deborah	ACN	GEORGIA	USA		D	2008	3928
29	616	Liu, Tiffany	ACN	GEORGIA	USA		D	2008	3928
30	375	Gobble, M	RALEIGHF	N. CAROLINA	USA		D	2008	3929
31	347	Fulton, Rachel L	LAKESHORE	ILLINOIS	USA		D	2007	3940
32	259	Dietrich, Casey J	FAP	PHILADELPH	USA		D	2007	3941
33	513	Jordan, Hannah M	BCFA	GULFCST TX	USA		D	2007	3942
34	180	Chou, Margaret	LFU	NEW JERSEY	USA		D	2007	3944
35	237	Delamater, Abby S	PVFA	CONNECTCUT	USA		D	2007	3946
36	167	Chanco-Everett, A		NORTH CA	USA		D	2006	3968
37	20	Allen, Cindy M	CANDLE	CONNECTCUT	USA		D	2005	3980
38	384	Gottler, V	SDE/UVSF	UTAH/S. IDA	USA		E	2009	4902
39	316	Faraj, Razan		SAN DIEGO	USA		E	2009	4903
40	240	DeLeon, Alexa M	SOUTHCFE	ORANGE CST	USA		E	2009	4904
41	1098	Zenger, Kathryn E		TENNESSEE	USA		E	2009	4905
42	638	Manning, Lynne	MOE FC	NEWENGLAND	USA		E	2009	4906
43	1080	Wu, Amy L	BIRMINGHAM	ALABAMA	USA		E	2009	4907
44	22	Almon, Kathryn G	TOU FC	N. CAROLINA	USA		E	2009	4908
45	993	Troll, Lindsay E	F.F.A	GATEWAY FL	USA		E	2009	4909
46	528	Katz, Pamela B	SOWEST	ARIZONA	USA		E	2008	4921
47	581	Lawrence, M	INC	KANSAS	USA		E	2008	4921
48	398	Gross, Rachel S	DFC	COLORADO	USA		E	2008	4921
49	285	Duerson, Lauren M		S. CAROLINA	USA		E	2008	4921
50	340	Frank, Hallie G	FIT	NORTH TEX	USA		E	2008	4922
51	990	Treloar, A	NMFC	NEW MEXICO	USA		E	2008	4923
52	9	Adams, Kimberly D	DOMINION	VIRGINIA	USA		E	2008	4923
53	171	Chenault, K		GEORGIA	USA		E	2008	4923
54	1006	Umanskiy, Tina		ILLINOIS	USA		E	2008	4924
55	700	Morell, Mariana	MFC FL	GOLDCST FL	USA		E	2008	4924
56	632	Madduri, M	VACADF	VIRGINIA	USA		E	2008	4924
57	947	Swale, Ryann E	SANFRANFC	NORTH CA	USA		E	2008	4925
58	783	Prestwich, P	SDE/UVSF	UTAH/S. IDA	USA		E	2008	4926
59	861	Schaffer, Ray	FENCERS	METRO NYC	USA		E	2008	4926
60	538	Kessler, D	BROOKLYNFC	METRO NYC	USA		E	2008	4927
61	381	Gong, Jan	FENCERS	LONG ISLND	USA		E	2008	4927
62	1055	White, Carla P	ACN	GEORGIA	USA		E	2008	4928
63	717	Ng, Megan M	EUF	METRO NYC	USA		E	2008	4928
64	780	Powers, Janine M	DCFC	MARYLAND	USA		E	2008	4929
65	602	Li, Yolanda L	FAW	WEST-ROCK	USA		E	2008	4929
66	957	Tasker, Monisha B	BOSTNFC	NEWENGLAND	USA		E	2008	4929
67	688	Mittleman, Jenny	BOSTNFC	NEWENGLAND	USA		E	2008	4929
68	798	Rawlings, J	WGFA	CENTRAL FL	USA		E	2007	4940
69	552	Knoppel, C	ASU	ARIZONA	USA		E	2007	4941
70	643	Martin, Lisa A	DFC	COLORADO	USA		E	2007	4945

	Num	Fencer	Club	Division	Country	Natl	World Class	Year	Index
71	974	Thouless, Helen R	SAS	WESTERN WA	USA		E	2007	4946
72	763	Pierce, Marcia M	BLUEGRASS /EKUFC	KENTUCKY	USA		E	2006	4962
73	273	Dorsel, C		TENNESSEE	USA		U		9903
74	140	Campbell, Lia R		S. CAROLINA	USA		U		9903
75	813	Rios, Dannette V	GARAGE	NATIONAL	USA		U		9904
76	499	Jiang, C	FENCERS	METRO NYC	USA		U		9907
77	551	Knapke, Helen R	AFAD	COLUMBUSOH	USA		U		9908
78	329	Ferron, Natasha A		CENTRAL FL	USA		U		9911
79	1045	Wehby, Emily L		TENNESSEE	USA		U		9912
80	385	Gould, Barbara M	FENCERS	METRO NYC	USA		U		9913
81	603	Li, Zhichun	BIRMINGHAM	ALABAMA	USA		U		9918
82	738	Othenin-Gorard, L		SO. CALIF.	USA		U		9919
83	403	Guertin, M		CANADA	CAN		U		9923
84	860	Schaefer, Kerry S	SAS	WESTERN WA	USA		U		9926
85	150	Carter, Carlene E	WGFA	CENTRAL FL	USA		U		9927
86	60	Barnes, A	ACN	GEORGIA	USA		U		9931
87	743	Pardue, Kristan M	UPFC	GATEWAY FL	USA		U		9932
88	916	Smith, Pamela S	FAW	WEST-ROCK	USA		U		9934
89	755	Pelypenko, E	ACN	GEORGIA	USA		U		9936
90	786	Puski, Suzette M	LOUISFC	KENTUCKY	USA		U		9938
91	457	Hofer, Carolyn	CFC	KANSAS	USA		U		9939
92	716	Newton, Avery D	PRISE	NEWENGLAND	USA		U		9939
93	232	DeChellis, B	UPFC	CENTRAL FL	USA		U		9942
94	975	Thurman, A	NIH R&W	CAPITOL	USA		U		9950
95	157	Castillo, N	UPFC	GATEWAY FL	USA		U		9952
96	768	Pitz, Sara R		GEORGIA	USA		U		9958
97	1101	Zinney, Rachel S	ACN	GEORGIA	USA		U		9959
98	63	Barrera, V	RCHSTER	WESTERN NY	USA		U		9963
99	48	Ausar-Sahu, U		METRO NYC	USA		U		9967
100	1097	Zazzera, C		NEW JERSEY	USA		U		9972
101	379	Goldstein, Mikela	FTFC	LONG ISLND	USA		U		9980
102	185	Clayton, Juliet N	NOFC	LOUISIANA	USA		U		9981
103	392	Griep, K	RCHSTER	WESTERN NY	USA		U		9985
104	1046	Wei, Olivia C	NORTHSFC	LONG ISLND	USA		U		9986
105	737	Osinski, B	ALL-AMER	N. CAROLINA	USA		U		9986
106	931	Steel, K		TENNESSEE	USA		U		9989
107	1014	Vashisht, Suparna	CFA	CENTRAL CA	USA		U		9990
108	891	Shaw, Allison N	UPFC	GATEWAY FL	USA		U		9991
109	633	Mahaney, S	ALL-AMER	N. CAROLINA	USA		U		9993
110	335	Fishman, K	FAW	WEST-ROCK	USA		U		9995
111	596	Lesser, Paula T	RCHSTER	WESTERN NY	USA		U		9998
112	461	Hooper, Evelyn E		TENNESSEE	USA		U		9999

Place	Fencer	V	B	VI	TS	TR	HI	Index	W/D	Exc	Adv
1	Elbert, Katie C	6	6	1.000	30	5	25	10002530	N	N	Y
2	Umanskiy, Tina	6	6	1.000	30	7	23	10002330	N	N	Y
3	Rios, Dannette V	6	6	1.000	30	8	22	10002230	N	N	Y
4 T	Baird-Remba, R	6	6	1.000	30	9	21	10002130	N	N	Y
4 T	Liu, Tiffany	6	6	1.000	30	9	21	10002130	N	N	Y
6	Lee, Audrey K	5	5	1.000	25	6	19	10001925	N	N	Y
7 T	Wilson, Hailee A	6	6	1.000	30	14	16	10001630	N	N	Y
7 T	Goldstein, Mikela	6	6	1.000	30	14	16	10001630	N	N	Y
9	Chapman, Lesley F	5	5	1.000	24	13	11	10001124	N	N	Y
10	Mukherjee, A	5	6	0.833	28	7	21	8335461	N	N	Y
11	Kang, Jessica J	5	6	0.833	27	9	18	8335160	N	N	Y
12	Zhang, Linda	5	6	0.833	27	10	17	8335060	N	N	Y
13	Gross, Rachel S	5	6	0.833	28	12	16	8334961	N	N	Y
14 T	Dickey, J	5	6	0.833	27	11	16	8334960	N	N	Y
14 T	Li, Sonya	5	6	0.833	27	11	16	8334960	N	N	Y
16 T	Lee, Julia	5	6	0.833	25	10	15	8334858	N	N	Y
16 T	Chou, Margaret	5	6	0.833	25	10	15	8334858	N	N	Y
18	Alexander, Erin M	5	6	0.833	29	17	12	8334562	N	N	Y
19	LeClair, K	5	6	0.833	27	15	12	8334560	N	N	Y
20	Gong, Jan	5	6	0.833	25	13	12	8334558	N	N	Y
21	Kessler, D	5	6	0.833	28	17	11	8334461	N	N	Y
22 T	Schaffer, Kay	5	6	0.833	27	17	10	8334360	N	N	Y
22 T	Gobble, M	5	6	0.833	27	17	10	8334360	N	N	Y
24	Farhane, E	5	6	0.833	26	19	7	8334059	N	N	Y
25	Little, D	4	5	0.800	23	11	12	8001223	N	N	Y
26	Stoyanovsky, M	4	5	0.800	20	11	9	8000920	N	N	Y
27	Santoro, E	4	6	0.667	26	16	10	6667692	N	N	Y
28 T	Duerson, Lauren M	4	6	0.667	27	18	9	6667593	N	N	Y
28 T	Ponticello, C	4	6	0.667	27	18	9	6667593	N	N	Y
30	Knoppel, C	4	6	0.667	26	17	9	6667592	N	N	Y
31	Lawrence, M	4	6	0.667	22	13	9	6667588	N	N	Y
32	Zazzera, C	4	6	0.667	26	18	8	6667492	N	N	Y
33	Lindstrom, E	4	6	0.667	22	14	8	6667488	N	N	Y
34	Troll, Lindsay E	4	6	0.667	21	14	7	6667387	N	N	Y
35	Martin, Lisa A	4	6	0.667	24	18	6	6667290	N	N	Y
36	Prestwich, P	4	6	0.667	24	19	5	6667190	N	N	Y
37 T	Carney, Dorothy	4	6	0.667	23	18	5	6667189	N	N	Y
37 T	Kunihiro, A	4	6	0.667	23	18	5	6667189	N	N	Y
39	Collins, R	4	6	0.667	27	23	4	6667093	N	N	Y
40	Faraj, Razan	4	6	0.667	25	22	3	6666991	N	N	Y
41	Pierce, Marcia M	4	6	0.667	24	21	3	6666990	N	N	Y
42	Dietrich, Casey J	4	6	0.667	25	23	2	6666891	N	N	Y
43	Chanco-Everett, A	4	6	0.667	24	22	2	6666890	N	N	Y
44	Griepp, K	4	6	0.667	21	21	0	6666687	N	N	Y
45	Guertin, M	3	5	0.600	17	14	3	6000317	N	N	Y
46	Fishman, K	3	6	0.500	23	18	5	5000523	N	N	Y
47	Zenger, Kathryn E	3	6	0.500	25	21	4	5000425	N	N	Y
48	Li, Yolanda L	3	6	0.500	22	18	4	5000422	N	N	Y
49	Vashisht Goel, R	3	6	0.500	22	19	3	5000322	N	N	Y
50	Powers, Janine M	3	6	0.500	24	23	1	5000124	N	N	Y
51	Feinglass, S	3	6	0.500	22	21	1	5000122	N	N	Y
52	Ng, Megan M	3	6	0.500	20	19	1	5000120	N	N	Y
53	McCarter, CJ F	3	6	0.500	21	21	0	5000021	N	N	Y
54	Madduri, M	3	6	0.500	23	24	-1	4999923	N	N	Y
55	Allen, Cindy M	3	6	0.500	22	23	-1	4999922	N	N	Y
56	Lesser, Paula T	3	6	0.500	20	21	-1	4999920	N	N	Y
57	Mittleman, Jenny	3	6	0.500	16	17	-1	4999916	N	N	Y
58	Puski, Suzette M	3	6	0.500	20	24	-4	4999620	N	N	Y
59	Vashisht, Suparna	3	6	0.500	21	26	-5	4999521	N	N	Y
60	Adams, Kimberly D	3	6	0.500	15	20	-5	4999515	N	N	Y
61	Fulton, Rachel L	3	6	0.500	19	25	-6	4999419	N	N	Y
62	Sherman, Jessica	3	6	0.500	18	27	-9	4999118	N	N	Y
63	Therloar, A	2	5	0.400	20	20	0	4000020	N	N	Y
64	Katz, Pamela B	2	5	0.400	19	21	-2	3999819	N	N	Y
65	Schaefer, Kerry S	2	5	0.400	15	20	-5	3999515	N	N	Y
66	Gottler, V	2	6	0.333	21	21	0	3333354	N	N	Y
67	Fang, Deborah	2	6	0.333	24	25	-1	3333257	N	N	Y
68	Thouless, Helen R	2	6	0.333	20	21	-1	3333253	N	N	Y
69	Hofer, Carolyn	2	6	0.333	20	22	-2	3333153	N	N	Y
70	Barrera, V	2	6	0.333	21	24	-3	3333054	N	N	Y

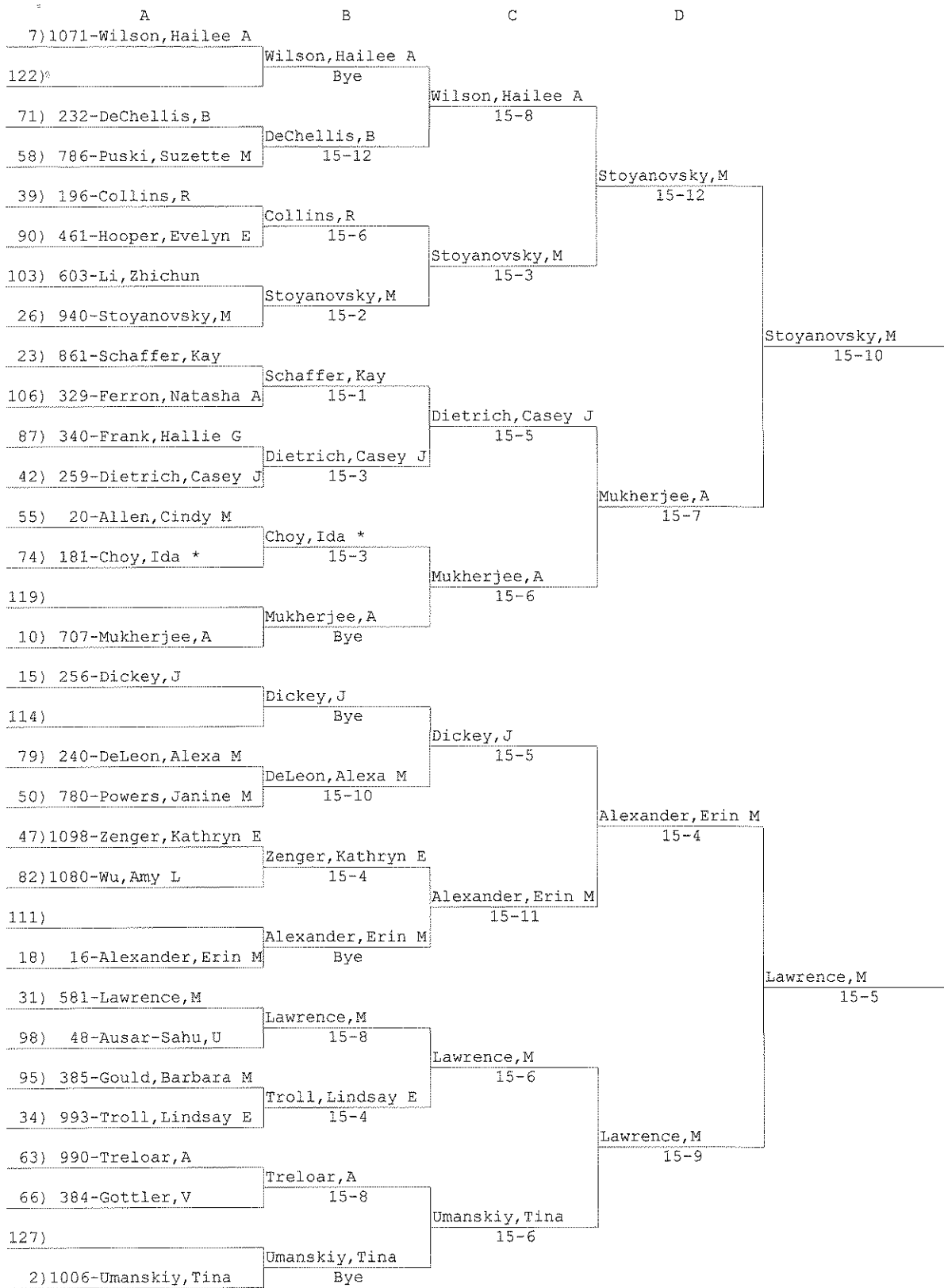
Place	Fencer	V	B	VI	TS	TR	HI	Index	W/D	Exc	Adv
71	DeChellis, B	2	6	0.333	20	23	-3	3333053	N	N	Y
72	Campbell, Lia R	2	6	0.333	19	22	-3	3333052	N	N	Y
73	Carter, Carlene E	2	6	0.333	17	21	-4	3332950	N	N	Y
74	Choy, Ida *	2	6	0.333	21	26	-5	3332854	N	N	Y
75	Newton, Avery D	2	6	0.333	20	25	-5	3332853	N	N	Y
76	Almon, Kathryn G	2	6	0.333	22	28	-6	3332755	N	N	Y
77 T	Morell, Mariana	2	6	0.333	18	24	-6	3332751	N	N	Y
77 T	Swale, Ryann E	2	6	0.333	18	24	-6	3332751	N	N	Y
79	DeLeon, Alexa M	2	6	0.333	17	23	-6	3332750	N	N	Y
80 T	Bush, Christine	2	6	0.333	16	22	-6	3332749	N	N	Y
80 T	Manning, Lynne	2	6	0.333	16	22	-6	3332749	N	N	Y
82	Wu, Amy L	2	6	0.333	17	24	-7	3332650	N	N	Y
83	Shaw, Allison N	2	6	0.333	16	23	-7	3332649	N	N	Y
84	Barnes, A	2	6	0.333	18	26	-8	3332551	N	N	Y
85	Clayton, Juliet N	2	6	0.333	16	26	-10	3332349	N	N	Y
86	Mahaney, S	2	6	0.333	12	26	-14	3331945	N	N	Y
87	Frank, Hallie G	1	5	0.200	12	21	-9	1999112	N	N	Y
88	Chenault, K	1	5	0.200	13	23	-10	1999013	N	N	Y
89	Othenin-Girard, L	1	5	0.200	8	20	-12	1998808	N	N	Y
90	Hooper, Evelyn E	1	6	0.167	16	24	-8	1665882	N	N	Y
91	Tasker, Monisha B	1	6	0.167	17	26	-9	1665783	N	N	Y
92	Pardue, Kristan M	1	6	0.167	14	25	-11	1665580	N	N	Y
93	Wei, Olivia C	1	6	0.167	12	23	-11	1665578	N	N	Y
94	Zinney, Rachel S	1	6	0.167	14	27	-13	1665380	N	N	Y
95	Gould, Barbara M	1	6	0.167	12	25	-13	1665378	N	N	Y
96	Dorsel, C	1	6	0.167	15	29	-14	1665281	N	N	Y
97	Rawlings, J	1	6	0.167	13	28	-15	1665179	N	N	Y
98	Ausar-Sahu, U	1	6	0.167	12	27	-15	1665178	N	N	Y
99	Knapke, Helen R	1	6	0.167	12	28	-16	1665078	N	N	Y
100	Osinski, B	1	6	0.167	11	29	-18	1664877	N	N	Y
101	Jiang, C	1	6	0.167	8	27	-19	1664774	N	N	Y
102	Smith, Pamela S	0	6	0.000	14	30	-16	-1586	N	N	Y
103	Li, Zhichun	0	5	0.000	8	24	-16	-1592	N	N	Y
104	Castillo, N	0	6	0.000	12	30	-18	-1788	N	N	Y
105	Pitz, Sara R	0	6	0.000	9	28	-19	-1891	N	N	Y
106	Ferron, Natasha A	0	6	0.000	10	30	-20	-1990	N	N	Y
107	White, Carla P	0	6	0.000	8	30	-22	-2192	N	N	Y
108	Thurman, A	0	6	0.000	5	28	-23	-2295	N	N	Y
109	Steel, K	0	6	0.000	6	30	-24	-2394	N	N	Y
110	Levitsky, J	0	6	0.000	1	30	-29	-2899	N	N	Y

E	F	G
1) 295-Elbert, Katie C	Goldstein, Mikela	
8) 379-Goldstein, Mikela	15-9	
5) 54-Baird-Remba, R	Baird-Remba, R	5) Baird-Rem... 15-10
4) 772-Ponticello, C	15-2	
3) 587-LeClair, K	Kang, Jessica J	Baird-Remba, R 15-9
6) 524-Kang, Jessica J	15-8	
7) 940-Stoyanovsky, M	Stoyanovsky, M	7) Stoyanovs... 15-14
2) 581-Lawrence, M	15-10	

A	B	C	D
1) 295-Elbert, Katie C	Elbert, Katie C		
128) []	Bye		
65) 860-Schaefer, Kerry S	Katz, Pamela B	Elbert, Katie C	
64) 528-Katz, Pamela B	15-12	15-5	
33) 609-Lindstrom, E	Lindstrom, E		Elbert, Katie C
96) 273-Dorsel, C	15-5		15-6
97) 798-Rawlings, J	Zazzera, C	Lindstrom, E	
32) 1097-Zazzera, C	15-7	15-10	
17) 592-Lee, Julia	Lee, Julia		Elbert, Katie C
112) []	Bye		15-12
81) 125-Bush, Christine	Li, Yolanda L	Lee, Julia	
48) 602-Li, Yolanda L	15-0	15-9	
49) 1013-Vashisht Goel, R	Vashisht Goel, R		Lee, Julia
80) 638-Manning, Lynne	15-3		15-14
113) []	Chou, Margaret	Vashisht Goel, R	
16) 180-Chou, Margaret	Bye	12-7	
9) 170-Chapman, Lesley F	Chapman, Lesley F		
120) []	Bye		
73) 150-Carter, Carlene E	Lesser, Paula T	Chapman, Lesley F	
56) 596-Lesser, Paula T	15-7	15-11	
41) 763-Pierce, Marcia M	Pierce, Marcia M		Farhane, E
88) 171-Chenault, K	15-3		15-14
105) 768-Pitz, Sara R	Farhane, E	Farhane, E	
24) 317-Farhane, E	15-5	10-9	
25) 614-Little, D	Little, D		Goldstein, Mikela
104) 157-Castillo, N	15-3		15-9
89) 738-Othenin-Girard, L	Faraj, Razan	Little, D	
40) 316-Faraj, Razan	15-9	15-3	
57) 688-Mittleman, Jenny	Campbell, Lia R		Goldstein, Mikela
72) 140-Campbell, Lia R	15-11		15-9
121) []	Goldstein, Mikela	Goldstein, Mikela	
8) 379-Goldstein, Mikela	Bye	15-6	

A	B	C	D
5) 54-Baird-Remba, R	Baird-Remba, R		
124)	Bye		
69) 457-Hofer, Carolyn	Adams, Kimberly D	Baird-Remba, R	
60) 9-Adams, Kimberly D	15-12	15-3	
37) 146-Carney, Dorothy	Carney, Dorothy		Baird-Remba, R
92) 743-Pardue, Kristan M	8-7		15-8
101) 499-Jiang, C	Duerson, Lauren M	Duerson, Lauren M	
28) 285-Duerson, Lauren M	15-2	15-8	
21) 538-Kessler, D	Kessler, D		Baird-Remba, R
108) 975-Thurman, A	15-7		15-12
85) 185-Clayton, Juliet N	Griep, K	Kessler, D	
44) 392-Griep, K	15-11	15-8	
53) 651-McCarter, CJ F	McCarter, CJ F		Zhang, Linda
76) 22-Almon, Kathryn G	15-9		15-11
117)	Zhang, Linda	Zhang, Linda	
12) 1099-Zhang, Linda	Bye	15-9	
13) 398-Gross, Rachel S	Gross, Rachel S		
116)	Bye		
77) 700-Morell, Mariana	Ng, Megan M	Ng, Megan M	
52) 717-Ng, Megan M	15-5	15-14	
45) 403-Guertin, M	Guertin, M		Ng, Megan M
84) 60-Barnes, A	15-12		15-12
109) 931-Steel, K	Gong, Jan	Gong, Jan	
20) 381-Gong, Jan	15-4	15-6	
29) 772-Ponticello, C	Ponticello, C		Ponticello, C
100) 737-Osinski, B	15-0		15-12
93) 1046-Wei, Olivia C	Prestwich, P	Ponticello, C	
36) 783-Prestwich, P	15-11	15-11	
61) 347-Fulton, Rachel L	Fulton, Rachel L		Ponticello, C
68) 974-Thouless, Helen R	15-8		15-9
125)	Liu, Tiffany	Liu, Tiffany	
4) 616-Liu, Tiffany	Bye	15-7	

	A	B	C	D
3) 813-Rios, Dannette V		Rios, Dannette V		
126)		Bye		
67) 315-Fang, Deborah		Fang, Deborah	Rios, Dannette V	
62) 1105-Sherman, Jessica		15-6	15-7	
35) 643-Martin, Lisa A		Martin, Lisa A		Rios, Dannette V
94) 1101-Zinney, Rachel S		15-6		15-14
99) 551-Knapke, Helen R		Knoppel, C	Knoppel, C	
30) 552-Knoppel, C		15-4	15-9	
19) 587-LeClair, K		LeClair, K		LeClair, K
110) 599-Levitsky, J		15-0		15-3
83) 891-Shaw, Allison N		Fishman, K	LeClair, K	
46) 335-Fishman, K		15-7	15-7	
51) 320-Feinglass, S		Feinglass, S		LeClair, K
78) 947-Swale, Ryann E		15-11		15-6
115)		Li, Sonya	Li, Sonya	
14) 1106-Li, Sonya		Bye	15-8	
11) 524-Kang, Jessica J		Kang, Jessica J		
118)		Bye		
75) 716-Newton, Avery D		Newton, Avery D	Kang, Jessica J	
54) 632-Madduri, M		15-10	15-9	
43) 167-Chanco-Everett, A		Chanco-Everett, A		Kang, Jessica J
86) 633-Mahaney, S		15-6		15-11
107) 1055-White, Carla P		Gobble, M	Chanco-Everett, A	
22) 375-Gobble, M		15-4	15-10	
27) 853-Santoro, E		Santoro, E		Kang, Jessica J
102) 916-Smith, Pamela S		15-8		13-12
91) 957-Tasker, Monisha B		Kunihiro, A	Santoro, E	
38) 567-Kunihiro, A		14-12	15-7	
59) 1014-Vashisht, Suparna		Barrera, V		Lee, Audrey K
70) 63-Barrera, V		15-9		15-11
123)		Lee, Audrey K	Lee, Audrey K	
6) 589-Lee, Audrey K		Bye	15-8	



*Webster
Borgos*



Pool: 1 Round: 1 Strip: *3*

Time In: 00:00:00 Time Out: 13:47:54

Name	1	2	3	4	5	6	7	V	TS	TR	TI	PL
✓ 1 Chou, Margaret <i>MC</i>	█	V4	2 ⁰	V5	V4	V5	V	5	25	10	+15	
✓ 2 Rawlings, J <i>JR</i>	3 ⁰	█	0	3 ⁰	0	V	2 ⁰	1	13	28	-15	
✓ 3 LeClair, K <i>KL</i>	V3	V	█	V5	V5	4	V	5	27	15	+12	
✓ 4 Chanco-Everett <i>EA</i>	1	V	3	█	V	V5	V	4	24	22	+2	
✓ 5 Li, Yolanda L <i>YL</i>	0	V5	3	4	█	V	V	3	22	18	+4	
✓ 6 Barrera, V <i>VB</i>	3	4	V5	2	2	█	V5	2	21	24	-3	
✓ 7 Ausar-Sahu, U <i>AS</i>	0	V5	2	3	2	0	█	1	12	27	-15	

*+33
-33*

4 Fencers	5 Fencers	6 Fencers	7 Fencers
1 - 4	1 - 2	1 - 2 3 - 6	1 - 4 3 - 1
2 - 3	3 - 4	4 - 5 5 - 1	2 - 5 4 - 6
1 - 3	5 - 1	2 - 3 3 - 4	3 - 6 7 - 2
2 - 4	2 - 3	5 - 6 6 - 2	7 - 1 3 - 5
3 - 4	5 - 4	3 - 1	5 - 4 1 - 6
1 - 2	1 - 3	6 - 4	2 - 3 2 - 4
	2 - 5	2 - 5	6 - 7 7 - 3
	4 - 1	1 - 4	5 - 1 6 - 5
	3 - 5	5 - 3	4 - 3 1 - 2
	4 - 2	1 - 6	6 - 2 4 - 7
		4 - 2	5 - 7

Warnings

1. *① 4 T Wimp*
① 4 T Wimp
2. *⑤ V4 Y*
3. *④ - 6 T CC*
+ ① - ④
4. _____
5. _____

Referee: *Webster/Borgos*

Scorekeeper: _____

Rane



Pool: 2 Round: 1 Strip: 4

Time In: 00:00:00 Time Out: 13:47:54

Name	1	2	3	4	5	6	7	V	TS	TR	TI	PL
1 Dietrich, Casey J	✓	VS	VS	VS	3	2	VS	4	25	23	+2	
2 Tasker, Monisha B	✓	VS	2	4	3	0	VS	1	17	26	-9	
3 Zinney, Rachel S	✓	2	VS	3	2	2	0	1	14	27	-13	
4 Powers, Janine M	✓	4	VS	VS	VS	4	1	3	24	23	+1	
5 Allen, Cindy M	✓	VS	VS	VS	1	4	3	3	22	23	-1	
6 Alexander, Erin M	✓	VS	VS	VS	VS	VS	4	5	29	17	+12	
7 Zazzera, C	✓	4	2	VS	VS	VS	VS	4	26	18	+8	

-23
+23

Ø

4 Fencers	5 Fencers	6 Fencers	7 Fencers
1 - 4	1 - 2	1 - 2 3 - 6	1 - 4 3 - 1
2 - 3	3 - 4	4 - 5 5 - 1	2 - 5 4 - 6
1 - 3	5 - 1	2 - 3 3 - 4	3 - 6 7 - 2
2 - 4	2 - 3	5 - 6 6 - 2	4 - 1 3 - 5
3 - 4	5 - 4	3 - 1	5 - 4 1 - 6
1 - 2	1 - 3	6 - 4	2 - 3 2 - 4
	2 - 5	2 - 5	5 - 7 7 - 3
	4 - 1	1 - 4	3 - 1 6 - 5
	3 - 5	5 - 3	4 - 3 1 - 2
	4 - 2	1 - 6	6 - 2 4 - 7
	4 - 2	4 - 2	5 - 7

Warnings
1. <i>Y3-6</i>
2. <i>cooly 7-2</i>
3. <i>Tasker - 1</i>
4. _____
5. _____

Referee: *Ed Kane*

Scorekeeper: _____

Harold



Pool: 3 Round: 1 Strip: 5

Time In: 00:00:00 Time Out: 13:47:54

Name	1	2	3	4	5	6	7	V	TS	TR	TI	PL
1 Feinglass, S	4	V	V	V	V	2	3	22	21	+1		
2 Fulton, Rachel L	V	1	V	V	V	2	3	19	25	-6		
3 Mittleman, Jenny	V	1	V	V	V	3	3	16	17	-1		
4 Knoppel, C	4	V	V	V	V	2	4	26	17	+9		
5 Gottler, V	V	4	1	3	V	3	2	21	21	0		
6 Pitz, Sara R	1	2	0	2	2	2	0	9	28	-19		
7 Goldstein, Mikela	V	V	V	V	V	V	6	30	14	+16		

4 Fencers	5 Fencers	6 Fencers	7 Fencers
1 - 4	1 - 2	1 - 2 3 - 6	1 - 4 3 - 1
2 - 3	3 - 4	4 - 5 5 - 1	2 - 5 4 - 6
1 - 3	5 - 1	2 - 3 3 - 4	3 - 6 7 - 2
2 - 4	2 - 3	5 - 6 6 - 2	7 - 1 3 - 5
3 - 4	5 - 4	3 - 1	5 - 4 1 - 6
1 - 2	1 - 3	6 - 4	2 - 3 2 - 4
	2 - 5	2 - 5	6 - 7 7 - 3
	4 - 1	1 - 4	5 - 1 6 - 5
	3 - 5	5 - 3	4 - 3 1 - 2
	4 - 2	1 - 6	6 - 2 4 - 7
		4 - 2	5 - 7

- Warnings
- _____
 - _____
 - _____
 - _____
 - _____

Referee: Harold

Scorekeeper: _____

Pool: 4 Round: 1 Strip: 6

J. Book

Time In: 00:00:00 Time Out: 13:47:54

Name	1	2	3	4	5	6	7	V	TS	TR	TI	PL
1. Martin, Lisa AL <i>RAM</i>		V5	1	3	V5	V5	V5	4	24	18	+6	
2. Lindstrom, E <i>EL</i>	2		3	V3	V4	V5	V5	4	22	14	+8	
3. Lindstrom, E <i>Li, Sonya</i>	V5	V4		3	V5	V5	V5	5	27	11	+16	
4. Gobble, M <i>M</i>	V5	2	V5		V5	V5	V5	5	27	17	+10	
5. Hooper, Evelyn E <i>EAH</i>	1	2	1	3		V5	4	1	16	24	-8	
6. White, Carla P <i>CEW</i>	2	0	1	3	0		2	0	8	30	-22	
7. Clayton, Juliet N <i>N</i>	3	1	0	2	V5	V5		2	16	26	-10	

4 Fencers	5 Fencers	6 Fencers	7 Fencers	Warnings
1 - 4	1 - 2	1 - 2 3 - 6	1 - 4 3 - 1	1. <u>2 3 VC</u>
2 - 3	3 - 4	4 - 5 5 - 1	2 - 5 4 - 6	2. <u>4 3 VC</u>
1 - 3	5 - 1	2 - 3 3 - 4	3 - 6 7 - 2	3. <u>7</u>
2 - 4	2 - 3	5 - 6 6 - 2	7 - 1 3 - 5	4. <u>6 5 VC</u>
3 - 4	5 - 4	3 - 1	5 - 4 1 - 6	5. <u></u>
1 - 2	1 - 3	6 - 4	2 - 3 2 - 4	
	2 - 5	2 - 5	6 - 7 7 - 3	
	4 - 1	1 - 4	5 - 1 6 - 5	
	3 - 5	5 - 3	4 - 3 1 - 2	
	4 - 2	1 - 6	6 - 2 4 - 7	
		4 - 2	5 - 7	

Referee: *James B. [Signature]*

Scorekeeper: _____

Littmann



Pool: 5 Round: 1 Strip: 7

Time In: 00:00:00 Time Out: 13:47:54

Name	1	2	3	4	5	6	7	V	TS	TR	TI	PL
✓1 Gong, Jan <i>JG</i>		4	V3	V5	V5	V5	V3	5	25	13	+12	
✓2 Faraj, Razan <i>RF</i>	V5		V5	V5	V5	2	3	4	25	22	+3	
✓3 Thouless, Helen <i>HT</i>	2	3		V5	2	V5	3	2	20	24	-1	
✓4 Castillo, N <i>N</i>	0	1	2		3	2	4	0	12	30	-18	
✓5 Fang, Deborah <i>DF</i>	3	4	V5	V5		4	3	2	24	25	-1	
✓6 Kunihiro, A <i>KA</i>	1	V5	2	V5	V5		V5	4	23	18	+5	
✓7 Griep, K <i>KG</i>	2	V5	V4	V5	V5	0		4	21	21	0	

1-DP
3-DP
20
20

4 Fencers	5 Fencers	6 Fencers	7 Fencers
1 - 4	1 - 2	1 - 2 3 - 6	1 - 4 3 - 1
2 - 3	3 - 4	4 - 5 5 - 1	2 - 5 4 - 6
1 - 3	5 - 1	2 - 3 3 - 4	3 - 6 7 - 2
2 - 4	2 - 3	5 - 6 6 - 2	7 - 1 3 - 5
3 - 4	5 - 4	3 - 1	5 - 4 1 - 6
1 - 2	1 - 3	6 - 4	2 - 3 2 - 4
	2 - 5	2 - 5	6 - 7 7 - 3
	4 - 1	1 - 4	5 - 1 6 - 5
	3 - 5	5 - 3	4 - 3 1 - 2
	4 - 2	1 - 6	6 - 2 4 - 7
		4 - 2	5 - 7

Warnings

1. ~~1-4~~ Y Equip
2. 3-6 Y Equip (R) Equip
3. 1-7 Y Equip
4. 2-3 Y Equip (R) Equip
5. _____

Referee: *Littmann*

Scorekeeper: _____

Oliver



Pool: 6 Round: 1 Strip: *8*

Time In: 00:00:00 Time Out: 13:47:54

Name	1	2	3	4	5	6	7	V	TS	TR	TI	PL
<i>AT.</i> 1 Thurman, A	0	2	1	1	0	1	0	5	28	-23		
<i>J.S.</i> 2 Liu, Tiffany	V	V	V	V	V	V	V	6	30	9	+21	
<i>M.D.</i> 3 Pierce, Marcia M	V	3	V	V	V	V	V	4	24	21	+3	
<i>M.M.</i> 4 Ng, Megan M	V	1	2	V	2	V	V	3	20	19	+1	
<i>JL</i> 5 Lee, Julia	V	3	V	V	V	V	V	5	25	10	+15	
6 DeLeon, Alexa M	V	0	4	3	0	V	V	2	17	23	-6	
<i>Oliver</i> 7 Wei, Olivia C	V ₃	2	3	0	1	3	V	1	12	23	-11	

Oliver

4 Fencers	5 Fencers	6 Fencers	7 Fencers
1 - 4	1 - 2	1 - 2 3 - 6	1 - 4 3 - 1
2 - 3	3 - 4	4 - 5 5 - 1	2 - 5 4 - 6
1 - 3	5 - 1	2 - 3 3 - 4	3 - 6 7 - 2
2 - 4	2 - 3	5 - 6 6 - 2	7 - 1 3 - 5
3 - 4	5 - 4	3 - 1	5 - 4 1 - 6
1 - 2	1 - 3	6 - 4	2 - 3 2 - 4
	2 - 5	2 - 5	6 - 7 7 - 3
	4 - 1	1 - 4	5 - 1 6 - 5
	3 - 5	5 - 3	4 - 3 1 - 2
	4 - 2	1 - 6	6 - 2 4 - 7
		4 - 2	5 - 7

- Warnings
- 2-5 YG!*
 - 3-7 YG!*
 - 7-0 YG!*
 - 6-0 YG!*
 - 1-0 YG!*

Referee: *Benson* Scorekeeper: *M. Rose*

Apostol



Pool: 7 Round: 1 Strip: 13

Time In: 00:00:00 Time Out: 13:47:54

Name	1	2	3	4	5	6	7	V	TS	TR	TI	PL
1 Newton, Avery D <i>AW ✓</i>	█	3	4	Vs	1	2	Vs	2	20	25	-5	
2 Wilson, Hailee A <i>WA ✓</i>	Vs	█	Vs	Vs	Vs	Vs	Vs	6	30	14	+16	
3 Kessler, D <i>DK ✓</i>	Vs	3	█	Vs	Vs	Vs	Vs	5	28	17	+11	
4 Choy, Ida * <i>IC ✓</i>	4	4	2	█	Vs	1	Vs	2	21	26	-5	
5 Campbell, Lia R <i>CR ✓</i>	Vs	1	2	3	█	3	Vs	2	19	22	-3	
6 Zenger, Kathryn E <i>KE ✓</i>	Vs	3	3	Vs	Vs	█	4	3	25	21	+4	
7 Osinski, B <i>BO ✓</i>	1	0	1	3	1	Vs	█	1	11	29	-18	

2-4 @

+0 ✓

4 Fencers	5 Fencers	6 Fencers	7 Fencers
1 - 4	1 - 2	1 - 2 3 - 6	1 - 4 3 - 1
2 - 3	3 - 4	4 - 5 5 - 1	2 - 5 4 - 6
1 - 3	5 - 1	2 - 3 3 - 4	3 - 6 7 - 2
2 - 4	2 - 3	5 - 6 6 - 2	7 - 1 3 - 5
3 - 4	5 - 4	3 - 1	5 - 4 1 - 6
1 - 2	1 - 3	6 - 4	2 - 3 2 - 4
	2 - 5	2 - 5	6 - 7 7 - 3
	4 - 1	1 - 4	5 - 1 6 - 5
	3 - 5	5 - 3	4 - 3 1 - 2
	4 - 2	1 - 6	6 - 2 4 - 7
		4 - 2	5 - 7

Warnings

1. 34 v 6
2. 31 v 2
3. _____
4. _____
5. _____

Referee: Apostol Serotkin Scorekeeper: _____

Sasaki



Pool: 8 Round: 1 Strip: 14

Kaplan

Time In: 00:00:00 Time Out: 13:47:54

Name	1	2	3	4	5	6	7	V	TS	TR	TI	PL
1 DeChellis, B		2	2	V	V	2	4	2	20	23	-3	
2 Ponticello, C	V		V	V	3	4	V	4	27	18	+9	
3 Wu, Amy L	V	1		4	2	0	V	2	17	24	-7	
4 Dorsel, C	1	4	V		2	0	3	1	15	29	-14	
5 Schaffer, Kay	2	V	V	V		V	V	5	27	17	+10	
6 Santoro, E	V	V	V	V	2		4	4	26	16	+10	
7 Vashisht, Suparna	V	1	2	V	3	V		3	21	26	-5	

-29
+29
0

4 Fencers	5 Fencers	6 Fencers	7 Fencers
1 - 4	1 - 2	1 - 2 3 - 6	1 - 4 3 - 1
2 - 3	3 - 4	4 - 5 5 - 1	2 - 5 4 - 6
1 - 3	5 - 1	2 - 3 3 - 4	3 - 6 7 - 2
2 - 4	2 - 3	5 - 6 6 - 2	7 - 1 3 - 5
3 - 4	5 - 4	3 - 1	5 - 4 1 - 6
1 - 2	1 - 3	6 - 4	2 - 3 2 - 4
	2 - 5	2 - 5	6 - 7 7 - 3
	4 - 1	1 - 4	5 - 1 6 - 5
	3 - 5	5 - 3	4 - 3 1 - 2
	4 - 2	1 - 6	6 - 2 4 - 7
		4 - 2	5 - 7

Warnings

1. 1-4 YGIR
 2. 3-6 YG1
 3. 7-1 YG1
 4. 5-4^r
 5. 6-7 YG-1
- (1-2) YG1
(1-6) YG1

Referee: SASAKI
Rouan Kaplan

Scorekeeper: _____

Pool: 9 Round: 1 Strip: 15

Time In: 00:00:00 Time Out: 13:47:54

Name	1	2	3	4	5	6	7	V	TS	TR	TI	PL
1 Carney, Dorothy	█	1	V5	2	V5	V5	V5	4	23	18	+5	
2 Rios, Dannette V	V5	█	V5	V5	V5	V5	V5	6	30	8	+22	
3 Manning, Lynne	1	1	█	3	V5	1	V5	2	16	22	-6	
4 Prestwich, P	V5	2	V5	█	2	V5	V5	4	24	19	+5	
5 Hofer, Carolyn	3	2	2	V5	█	3	V5	2	20	22	-2	
6 McCarter, CJ F	2	2	V5	3	V4	█	V5	3	21	21	0	
7 Steel, K	2	0	0	1	1	2	█	0	6	30	-24	

21 ✓

4 Fencers	5 Fencers	6 Fencers	7 Fencers
1 - 4	1 - 2	1 - 2 3 - 6	1 - 4 3 - 1
2 - 3	3 - 4	4 - 5 5 - 1	2 - 5 4 - 6
1 - 3	5 - 1	2 - 3 3 - 4	3 - 6 7 - 2
2 - 4	2 - 3	5 - 6 6 - 2	7 - 1 3 - 5
3 - 4	5 - 4	3 - 1	5 - 4 1 - 6
1 - 2	1 - 3	6 - 4	2 - 3 2 - 4
	2 - 5	2 - 5	6 - 7 7 - 3
	4 - 1	1 - 4	5 - 1 6 - 5
	3 - 5	5 - 3	4 - 3 1 - 2
	4 - 2	1 - 6	6 - 2 4 - 7
		4 - 2	5 - 7

Warnings

1. 3/5y Body Col
2. 2/19 y. c/c
3. 2/19 R c/c
4. _____
5. _____

Referee: Crockett / AR Clements Scorekeeper: _____

Pool: 10

Round: 1

Strip: 16

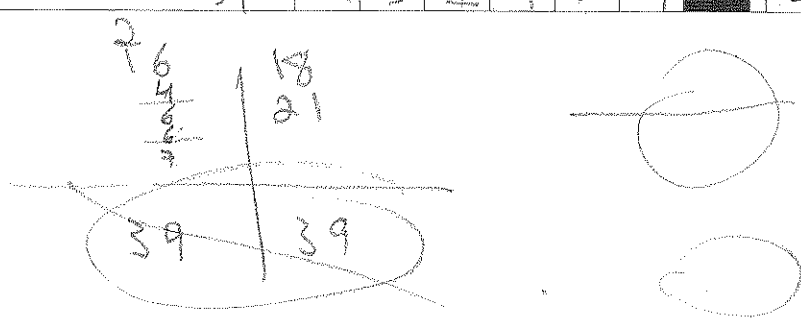
Shaker



Time In: 00:00:00

Time Out: 13:47:54

Name	1	2	3	4	5	6	7	V	TS	TR	TI	PL
1 Kang, Jessica J	W	W	W	D	W	W	W	5	27	9	+18	
2 Knapke, Helen R	D	W	D	D	D	W	D	1	12	28	-16	
3 Puski, Suzette M	D	W	W	D	D	W	W	3	20	24	-4	
4 Baird-Remba, R	W	W	W	W	W	W	W	6	30	9	+21	
5 Swale, Ryann E	D	W	W	D	W	D	D	2	18	24	-6	
6 Almon, Kathryn G	D	D	D	D	W	W	W	2	22	28	-6	
7 Shaw, Allison N	D	W	D	D	W	D	W	2	16	23	-7	



4 Fencers	5 Fencers	6 Fencers	7 Fencers
1 - 4	1 - 2	1 - 2 3 - 6	1 - 4 3 - 1
2 - 3	3 - 4	4 - 5 5 - 1	2 - 5 4 - 6
1 - 3	5 - 1	2 - 3 3 - 4	3 - 6 7 - 2
2 - 4	2 - 3	5 - 6 6 - 2	7 - 1 3 - 5
3 - 4	5 - 4	3 - 1	5 - 4 1 - 6
1 - 2	1 - 3	6 - 4	2 - 3 2 - 4
	2 - 5	2 - 5	6 - 7 7 - 3
	4 - 1	1 - 4	5 - 1 6 - 5
	3 - 5	5 - 3	4 - 3 1 - 2
	4 - 2	1 - 6	6 - 2 4 - 7
		4 - 2	5 - 7

Warnings

- _____
- _____
- _____
- _____
- _____

Referee:

Shaker R L

Scorekeeper:

Torchia
Feldman

Pool: 11 Round: 1 Strip: 17

Time In: 00:00:00 Time Out: 13:47:54

Name	1	2	3	4	5	6	7	V	TS	TR	TI	PL
1 Jiang, C	0	1	0	0	0	1	2	1	8	27	-19	6
2 Troll, Lindsay	1	0	1	1	0	1	1	4	21	14	+7	3
3 Smith, Pamela S	2	2	0	4	1	1	4	0	14	30	-16	7
4 Vashisht Goel, R	1	1	1	0	3	3	1	3	22	19	+3	4
5 Dickey, J	1	1	1	1	0	2	1	5	27	11	+16	2
6 Umanskiy, Tina	1	1	1	1	1	0	1	6	30	7	+23	1
7 Mahaney, S	1	1	1	0	1	0	0	2	12	26	-14	5

49

4 Fencers	5 Fencers	6 Fencers	7 Fencers
1 - 4	1 - 2	1 - 2 3 - 6	1 - 4 3 - 1
2 - 3	3 - 4	4 - 5 5 - 1	2 - 5 4 - 6
1 - 3	5 - 1	2 - 3 3 - 4	3 - 6 7 - 2
2 - 4	2 - 3	5 - 6 6 - 2	7 - 1 3 - 5
3 - 4	5 - 4	3 - 1	5 - 4 1 - 6
1 - 2	1 - 3	6 - 4	2 - 3 2 - 4
	2 - 5	2 - 5	6 - 7 7 - 3
	4 - 1	1 - 4	5 - 1 6 - 5
	3 - 5	5 - 3	4 - 3 1 - 2
	4 - 2	1 - 6	6 - 2 4 - 7
		4 - 2	5 - 7

Warnings

- _____
- _____
- _____
- _____
- _____

Referee: Torchia

Scorekeeper: _____

Wolfson



Pool: 12 Round: 1 Strip: 18

Time In: 00:00:00 Time Out: 13:47:54

Name	1	2	3	4	5	6	7	V	TS	TR	TI	PL
✓ 1 Gross, Rachel S <i>EG</i>	█	V5	3	V5	V5	V5	V5	5	28	12	16	
✓ 2 Ferron, Natasha A <i>A</i>	█	█	3	4	0	1	0	0	10	30	-20	
✓ 3 Collins, R <i>R</i>	V5	V5	█	3	V5	4	V5	4	27	23	4	
✓ 4 Madduri, M <i>M</i>	█	V5	V5	█	V5	4	3	3	23	24	-1	
✓ 5 Pardue, Kristan M <i>M</i>	█	V5	3	2	█	2	0	1	17	25	-11	
✓ 6 Farhane, E <i>E</i>	█	V5	V5	V5	V5	█	V5	5	26	19	7	
✓ 7 Fishman, K <i>K</i>	█	V5	4	V5	V5	3	█	3	23	18	5	

3

4 Fencers	5 Fencers	6 Fencers	7 Fencers
1 - 4	1 - 2	1 - 2 3 - 6	1 - 4 3 - 1
2 - 3	3 - 4	4 - 5 5 - 1	2 - 5 4 - 6
1 - 3	5 - 1	2 - 3 3 - 4	3 - 6 7 - 2
2 - 4	2 - 3	5 - 6 6 - 2	7 - 1 3 - 5
3 - 4	5 - 4	3 - 1	5 - 4 1 - 6
1 - 2	1 - 3	6 - 4	2 - 3 2 - 4
	2 - 5	2 - 5	6 - 7 7 - 3
	4 - 1	1 - 4	5 - 1 6 - 5
	3 - 5	5 - 3	4 - 3 1 - 2
	4 - 2	1 - 6	6 - 2 4 - 7
		4 - 2	5 - 7

Warnings

1. *0-3 7*
2. *0-4*
3. _____
4. _____
5. _____

Referee: *Wolfson*

Scorekeeper: _____

Johnson

Ahao



Pool: 13 Round: 1 Strip: 19

Time In: 00:00:00 Time Out: 13:47:54

Name	1	2	3	4	5	6	7	V	TS	TR	TI	PL
1 Duerson, Lauren M		V4	V5	4	4	V5	V5	4	27	18	+9	2
2 Mukherjee, A	3		V5	V5	V5	V5	V5	5	28	7	+21	1
3 Barnes, A	2	2		0	4	V5	V5	2	18	26	-8	7
4 Morell, Mariana	V5	0	V5		4	2	2	2	18	24	-6	5
5 Sherman, Jessica	V5	0	V5	V5		0	3	3	18	27	-9	4
6 Bush, Christine	1	0	4	V5	V5		1	2	16	22	-6	6
7 Lesser, Paula T	2	1	2	V5	V5	V5		3	20	21	-1	3

$$\begin{array}{r} 9 \\ 21 \\ \hline 30 \end{array}$$

$$\begin{array}{r} 8 \\ 4 \\ 2 \\ 1 \\ \hline 30 \end{array}$$
1/4

4 Fencers	5 Fencers	6 Fencers	7 Fencers
1 - 4	1 - 2	1 - 2 3 - 6	1 - 4 3 - 1
2 - 3	3 - 4	4 - 5 5 - 1	2 - 5 4 - 6
1 - 3	5 - 1	2 - 3 3 - 4	3 - 6 7 - 2
2 - 4	2 - 3	5 - 6 6 - 2	7 - 1 3 - 5
3 - 4	5 - 4	3 - 1	5 - 4 1 - 6
1 - 2	1 - 3	6 - 4	2 - 3 2 - 4
	2 - 5	2 - 5	6 - 7 7 - 3
	4 - 1	1 - 4	5 - 1 6 - 5
	3 - 5	5 - 3	4 - 3 1 - 2
	4 - 2	1 - 6	6 - 2 4 - 7
		4 - 2	5 - 7


Warnings

1. 2-5: 4200
2. 2-3: 4200
3. _____
4. _____
5. _____

Referee: *Ward / Kelly Johnson*

Scorekeeper: *Ward / WZ*

Pool: 14 Round: 1 Strip: 20

Mandoki 

Time In: 00:00:00 Time Out: 13:47:54

Name	1	2	3	4	5	6	7	V	TS	TR	TI	PL
1 Elbert, Katie C <i>KCB</i>	VS	VS	VS	VS	VS	VS	VS	6/6	30	5	+25	1
2 Adams, Kimberly D <i>KA</i>	DO	DO	VS	VS	VS	VS	VS	3/6	15	20	-5	4
3 Zhang, Linda <i>LZ</i>	D2	VS	DO	VS	VS	VS	VS	5/6	27	10	+17	2
4 Gould, Barbara M <i>BE</i>	D2	D3	DO	DO	D1	D1	VS	1/6	12	25	-13	6
5 Lawrence, M <i>ML</i>	D1	VS	D1	VS	DO	VS	VS	4/6	22	13	+9	3
6 Carter, Carlene E <i>CE</i>	DO	D2	D4	VS	D1	DO	VS	2/6	17	21	-4	5
7 Levitsky, J <i>JL</i>	DO	DO	DO	DO	D1	DO	DO	0/6	1	30	-29	7

Handwritten calculations:
 29
 4
 12
 5
 51
 25
 17
 9
 51

4 Fencers	5 Fencers	6 Fencers	7 Fencers
1 - 4	1 - 2	1 - 2 3 - 6	1 - 4 3 - 1
2 - 3	3 - 4	4 - 5 5 - 1	2 - 5 4 - 6
1 - 3	5 - 1	2 - 3 3 - 4	3 - 6 7 - 2
2 - 4	2 - 3	5 - 6 6 - 2	7 - 1 3 - 5
3 - 4	5 - 4	3 - 1	5 - 4 1 - 6
1 - 2	1 - 3	6 - 4	2 - 3 2 - 4
	2 - 5	2 - 5	6 - 7 7 - 3
	4 - 1	1 - 4	5 - 1 6 - 5
	3 - 5	5 - 3	4 - 3 1 - 2
	4 - 2	1 - 6	6 - 2 4 - 7
		4 - 2	5 - 7

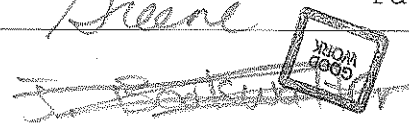
Warnings

1. 14 - 7 y
2. _____
3. _____
4. _____
5. _____

Referee: Mandoki Scorekeeper: _____

Greene

Pool: 15 Round: 1 Strip: 1



Time In: 00:00:00 Time Out: 13:47:55

Name	1	2	3	4	5	6	V	TS	TR	TI	PL
1 Chapman, Lesley F <i>LF</i>	█	V5	V5	V5	V4	V5	5	24	13	+11	1
2 Katz, Pamela B	4	█	2	3	V5	V5	2	19	21	-2	4
3 Little, D <i>SD</i>	3	V5	█	V5	V5	V5	4	23	11	+12	2
4 Treloar, A	3	V5	3	█	V5	4	2	20	00	0	3
5 Li, Zhichun <i>Li Zhichun</i>	1	3	1	2	█	1	0	8	24	-16	6
6 Schaefer, Kerry S <i>KS</i>	2	3	0	V5	V5	█	2	15	20	-5	5

15
+23
-23

4 Fencers	5 Fencers	6 Fencers	7 Fencers
1 - 4	1 - 2	1 - 2 3 - 6	1 - 4 3 - 1
2 - 3	3 - 4	4 - 5 5 - 1	2 - 5 4 - 6
1 - 3	5 - 1	2 - 3 3 - 4	3 - 6 7 - 2
2 - 4	2 - 3	5 - 6 6 - 2	7 - 1 3 - 5
3 - 4	5 - 4	3 - 1	5 - 4 1 - 6
1 - 2	1 - 3	6 - 4	2 - 3 2 - 4
	2 - 5	2 - 5	6 - 7 7 - 3
	4 - 1	1 - 4	5 - 1 6 - 5
	3 - 5	5 - 3	4 - 3 1 - 2
	4 - 2	1 - 6	6 - 2 4 - 7
		4 - 2	5 - 7

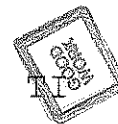
Warnings

- 5-6 (S) w/ w/b*
- (S) touch up w/ w/b as it had*
5-1(1) w/ w/b
- _____
- _____
- _____

Referee: *Chal E. Greene* Scorekeeper: *CEG*

Pool: 16 Round: 1 Strip: 2 **ELLIS**

Time In: 00:00:00 Time Out: 13:47:55



Name	1	2	3	4	5	6	V	TS	TR	PL	
1 Othenin-Girard, L	0	1	1	0	1	1	1	+8	-20	-12	6
2 Chenault, K	1	0	1	3	2	1	1	+13	-23	-10	5
3 Frank, Hallie G	1	3	0	3	2	1	1	+12	-21	-9	4
4 Lee, Audrey K	1	1	1	0	1	1	5	+25	-6	+10	1
5 Stoyanovsky, M	1	1	1	0	0	1	4	+20	-1	+9	2
6 Guertin, M	1	1	1	1	1	0	3	+17	-14	+3	3

51
481
6

4 Fencers	5 Fencers	6 Fencers	7 Fencers
1 - 4	1 - 2	1 - 2 3 - 6	1 - 4 3 - 1
2 - 3	3 - 4	4 - 5 5 - 1	2 - 5 4 - 6
1 - 3	5 - 1	2 - 3 3 - 4	3 - 6 7 - 2
2 - 4	2 - 3	5 - 6 6 - 2	7 - 1 3 - 5
3 - 4	5 - 4	3 - 1	5 - 4 1 - 6
1 - 2	1 - 3	6 - 4	2 - 3 2 - 4
	2 - 5	2 - 5	6 - 7 7 - 3
	4 - 1	1 - 4	5 - 1 6 - 5
	3 - 5	5 - 3	4 - 3 1 - 2
	4 - 2	1 - 6	6 - 2 4 - 7
		4 - 2	5 - 7

Warnings

1. SY, R, P

2. _____

3. _____

4. _____

5. _____

Referee: Taylor Ellis

Scorekeeper: _____

Referee Name	Pool Round 1	DE No Rep.	Round 2	Final 8 Round 3	Level	Observer
Alperstein, D	7					
Bookwalter, James	4	A(2)	B(2)	C(1)	D(...)	
Borgos, Susan	1					
Burchard, Peter	5	D(1)				
Butler, Philip N		A(2)	B(2)	C(1)		
Clements, Aaron	9	A(3)	B(2)	C(1)	D(...E(1))	
Cochrane, Bob	9					
Delgado, Fernando		A(3)	B(3)	C(1)	D(...E(1))	
Ellis, Taylor S	16	A(2)	B(2)	C(1)		
Feldman, Jill	11	A(3)	B(2)	C(1)		
Greene II, Charles	15					
Hardt, Ben	3					
Johnson, Kelly	13	A(2)	B(2)	C(1)	D(...F(1))	G(1)
Kane, Jr., Ed.	2					
Kaplan, Maia	8					
Littmann, Jane	5					
Lu,	6					
Mandoki, Sandor	14	A(3)	B(1)	C(1)		
Nazarova, Nadia		A(4)	B(2)	C(1)	D(...E(1))	
No Sig.		A(1)				
Ross, Michael	6	A(3)	B(2)	C(1)	D(...F(1))	
Sasaki, Peet	8	A(3)	B(2)			
Serotkin, Ian		A(3)	B(2)	C(1)		
Shaker, Maged	10	A(3)	B(2)	C(2)	E(1)	
Torchia, Daniel	11	A(3)	B(3)	C(1)	D(...)	
Webster, Patrick	1	A(4)	B(2)	C(1)		
Wolfson, Kyle	12	A(2)	B(1)	C(1)		
Zhoa,	13					